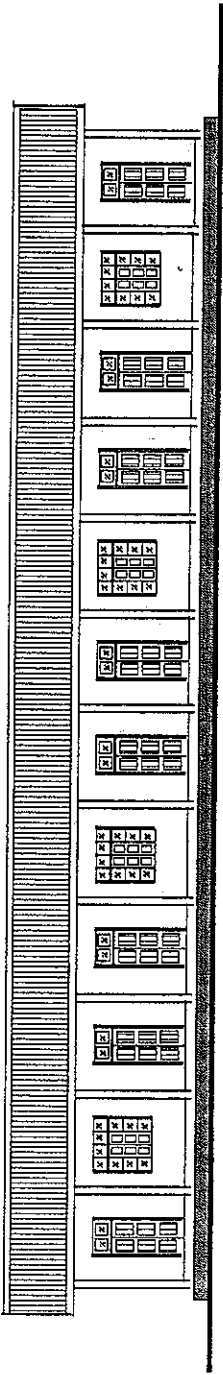
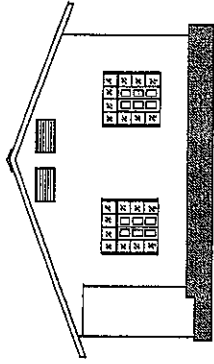


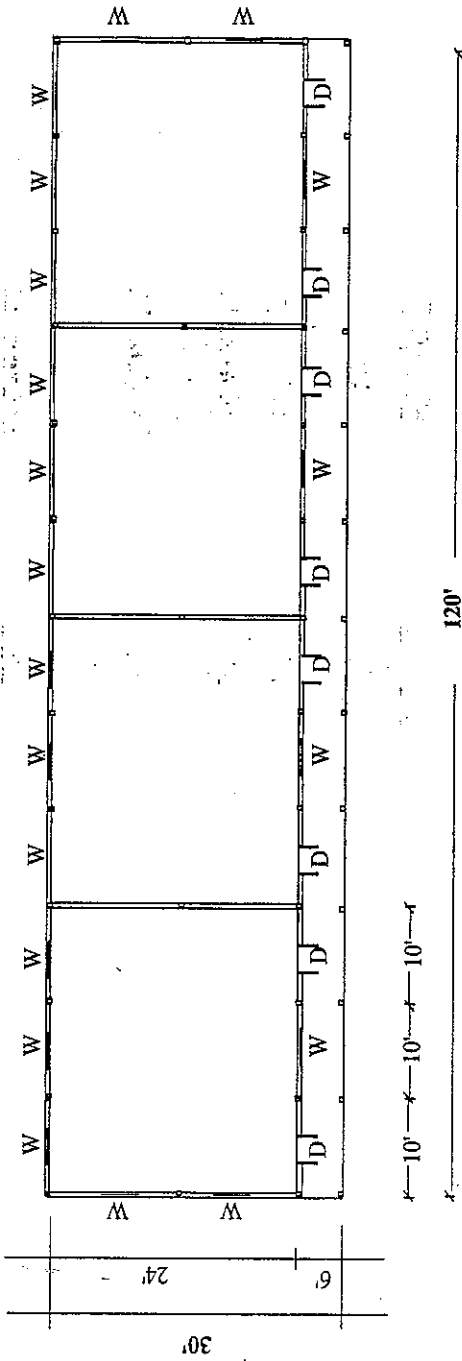
(120'x30') ONE STOREY REINFORCED CONCRETE SCHOOL BUILDING



FRONT VIEW

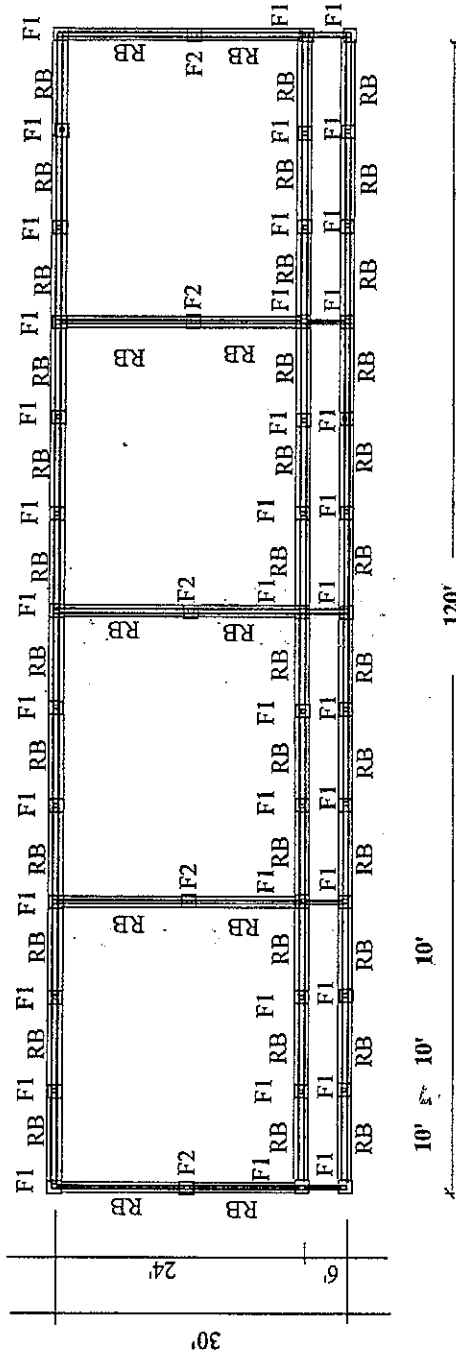


SIDE VIEW

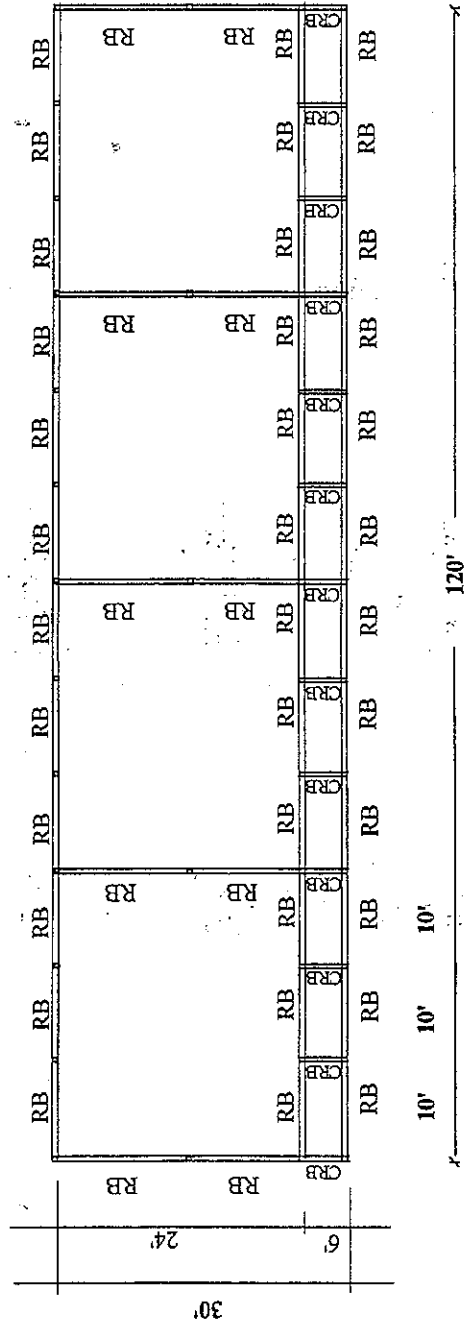


PLAN

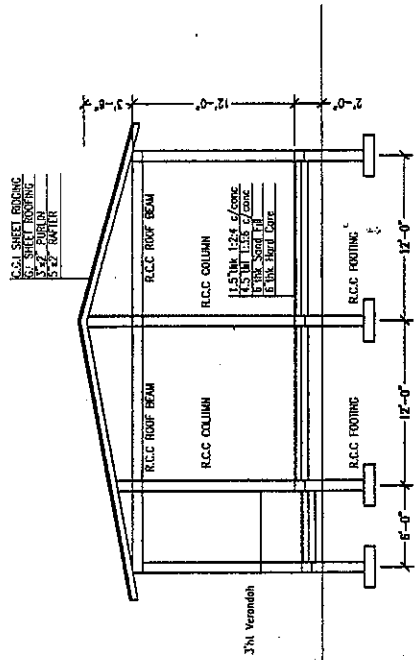
(120'x30') One Storey Reinforced Concrete School Building



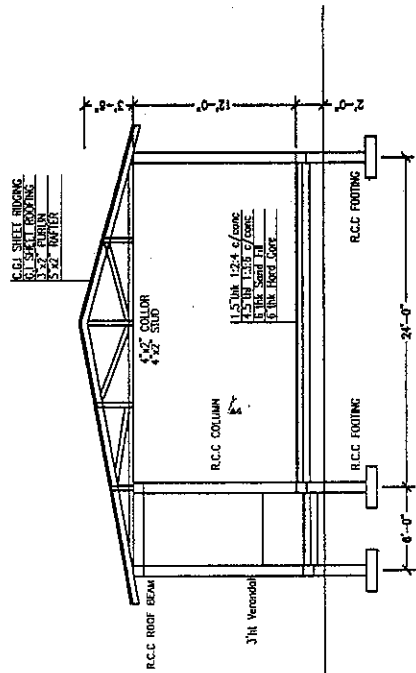
FOUNDATION PLAN



ROOF BEAM PLAN



CROSS SECTION B-B



CROSS SECTION A-A

### R.C.C Beam Schedule

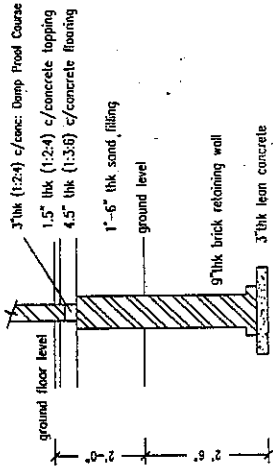
TYPE	SIZE	TOP BARS	BOTTOM BARS	BOTTOM BARS	STIRRUPS
PB1	9"x9"	2 # 5/8" #	2 # 5/8" #	-	1/4" # @ 6" c/c
RB	9"x9"	2 # 5/8" #	2 # 5/8" #	-	1/4" # @ 6" c/c

### R.C.C Footing Schedule

TYPE	SIZE	MAIN BARS	DISTRIBUTION BARS	REMARK
F1	3'-0"x3'-3"x0'-6"	5/8" # M.S. Rods @ 5" c/c	5/8" # M.S. Rods @ 5" c/c	

### R.C.C Column Schedule

TYPE	SIZE	REINFORCEMENT	DESCRIPTION
C	9"x9"	4#5/8" # M.S. Rods	FOOTING TO ROOF BEAM



DETAIL OF INTERIOR BRICK WALL

Scale - 3/8" = 1'-0"

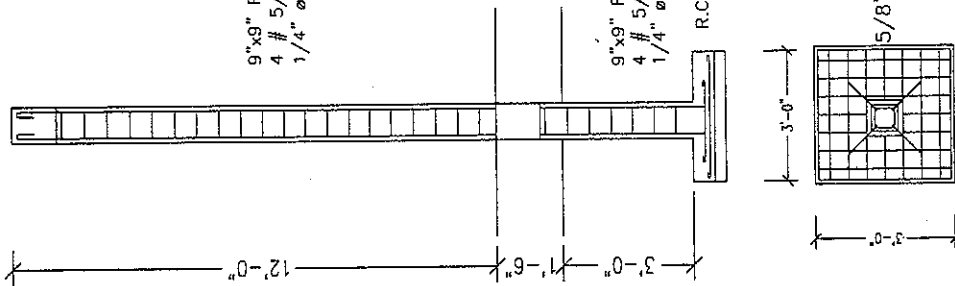
9"x9" R.C.C Column  
4 # 5/8" # M.S. Rods  
1/4" # Ties @ 6" c/c

9"x9" R.C.C Column  
4 # 5/8" # M.S. Rods  
1/4" # Ties @ 6" c/c

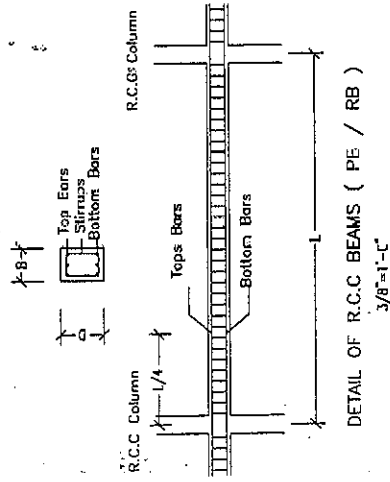
9"x9" R.C.C Column  
4 # 5/8" # M.S. Rods  
1/4" # Ties @ 6" c/c

R.C.C Footing

5/8" # M.S. Rods @ 5" c/c



DETAIL OF COLUMN FOOTING



DETAIL OF R.C.C BEAMS ( PE / RB )  
3/8"=1'-0"